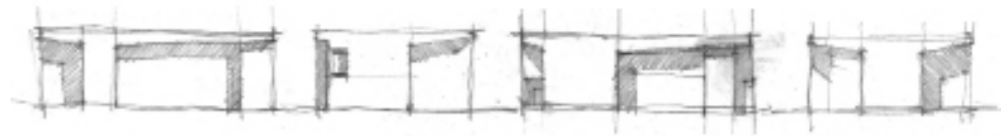


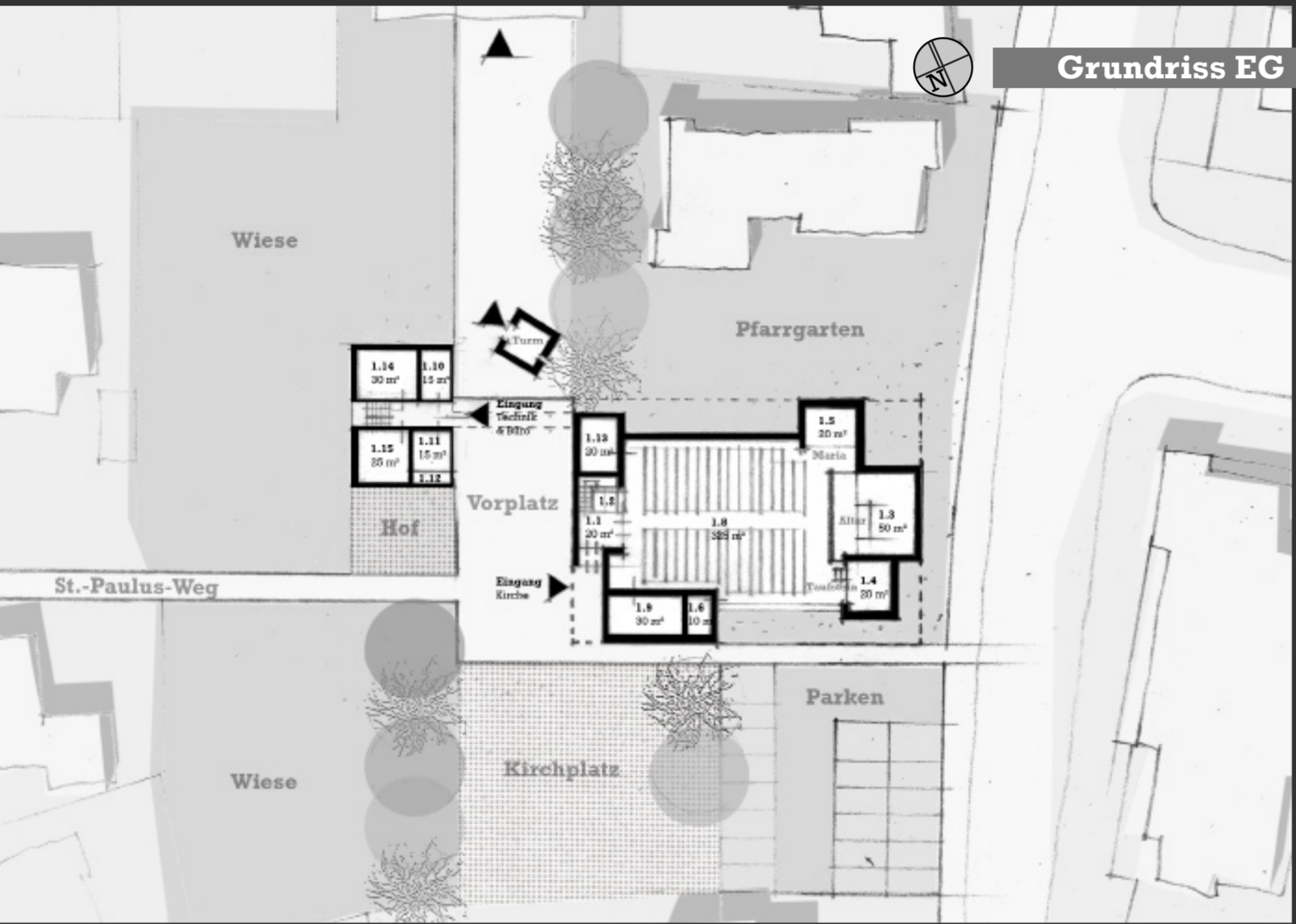
XXXXXX

St. Paulus

Realisierungswettbewerb
zum Neubau der Pfarrkirche
in Balingen-Frommern

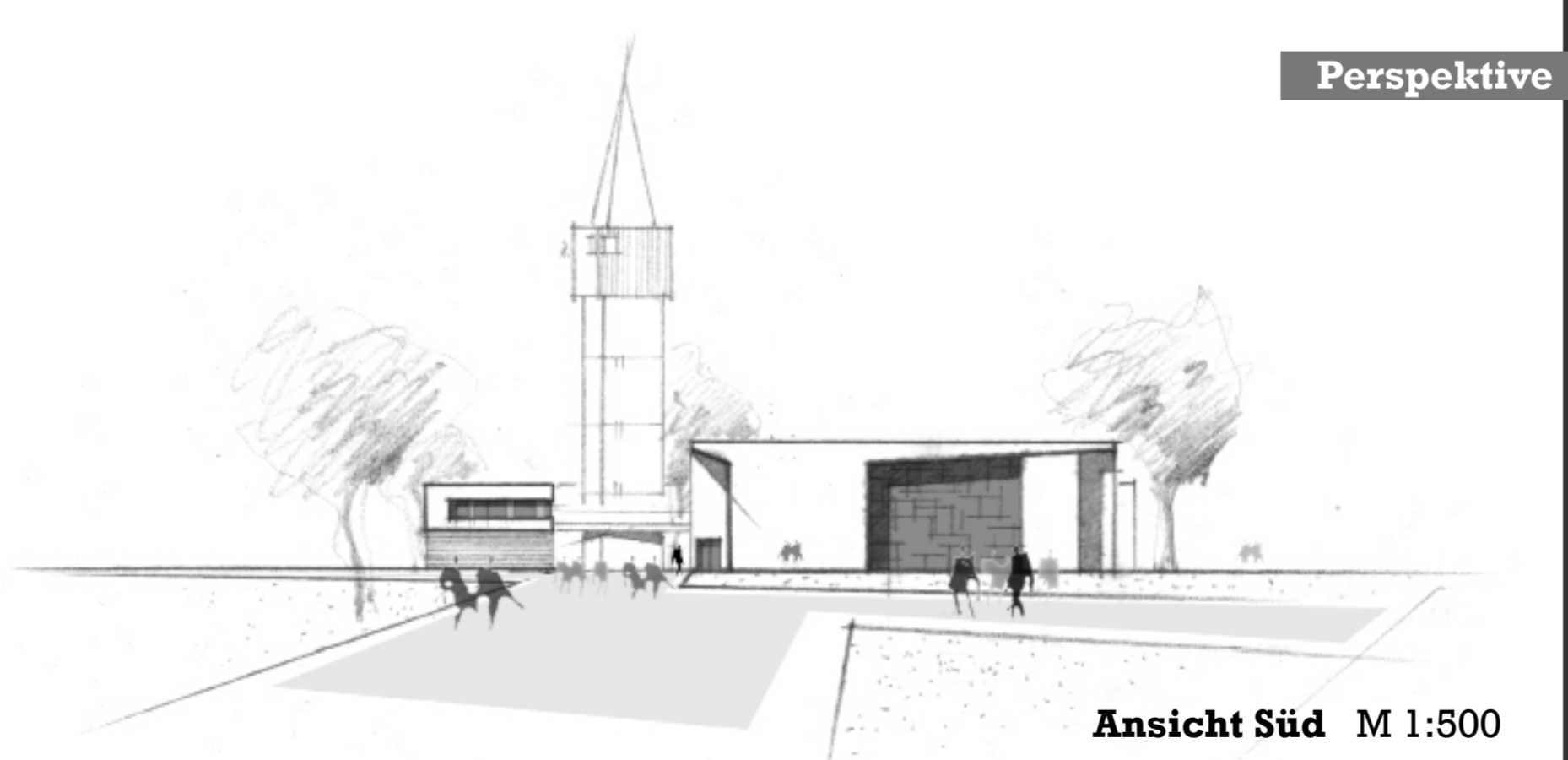
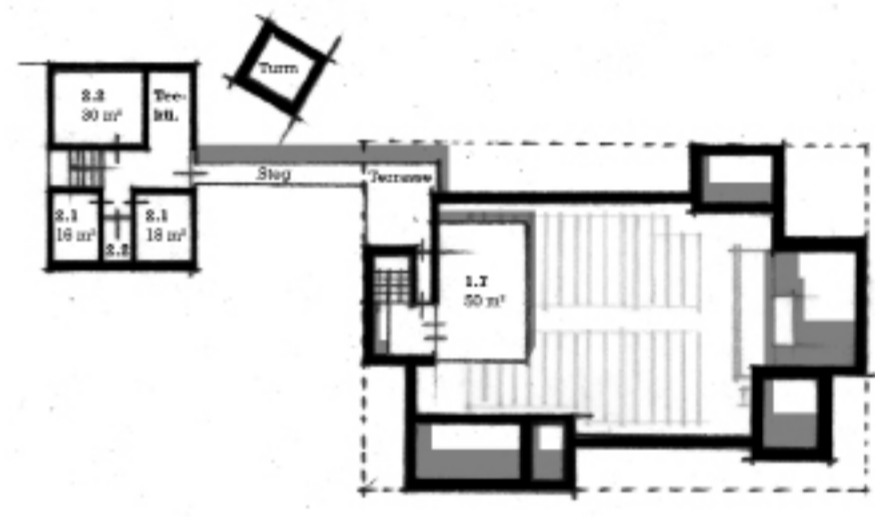


Lageplan M 1:1000



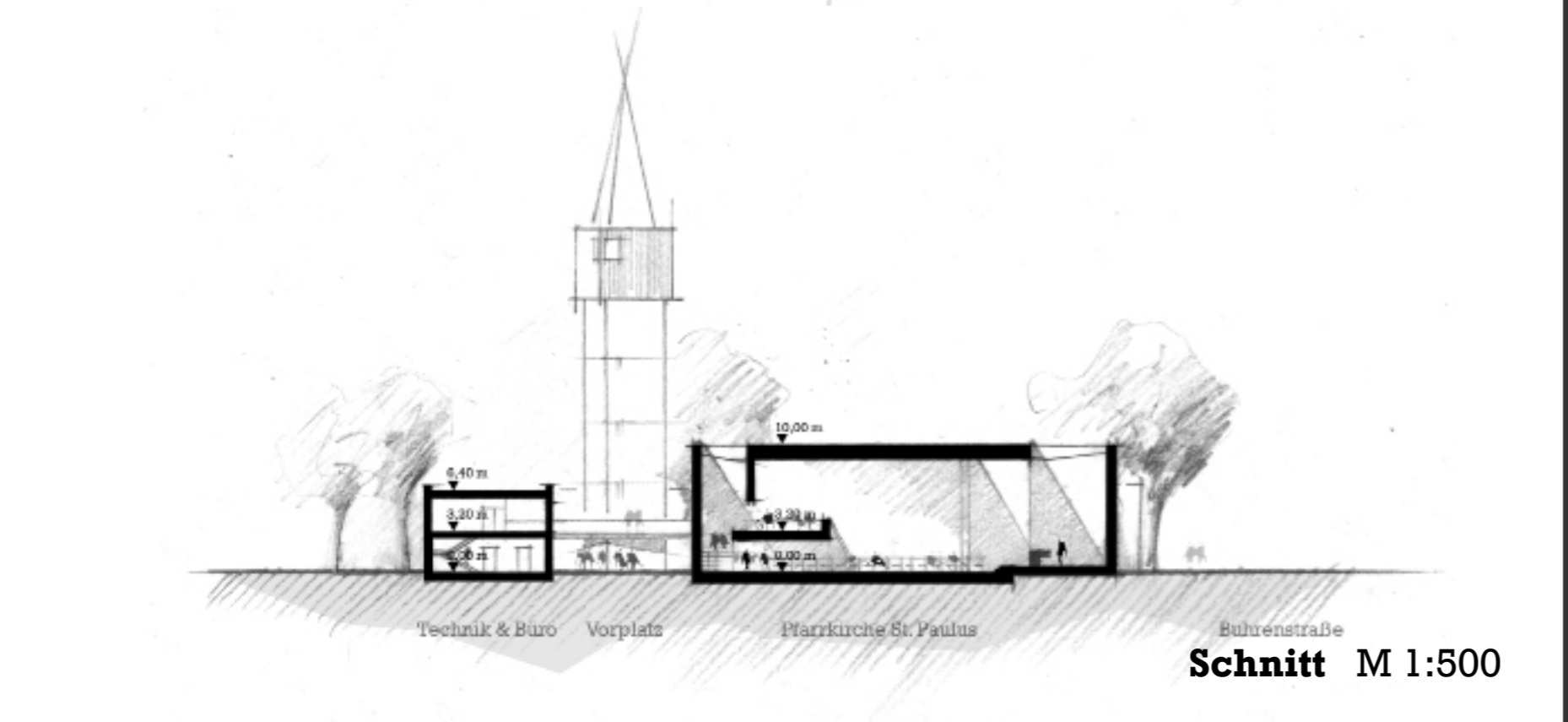
Grundriss EG M 1:500

Grundriss OG M 1:500



Perspektive von Südosten

Ansicht Süd M 1:500



Schnitt M 1:500

